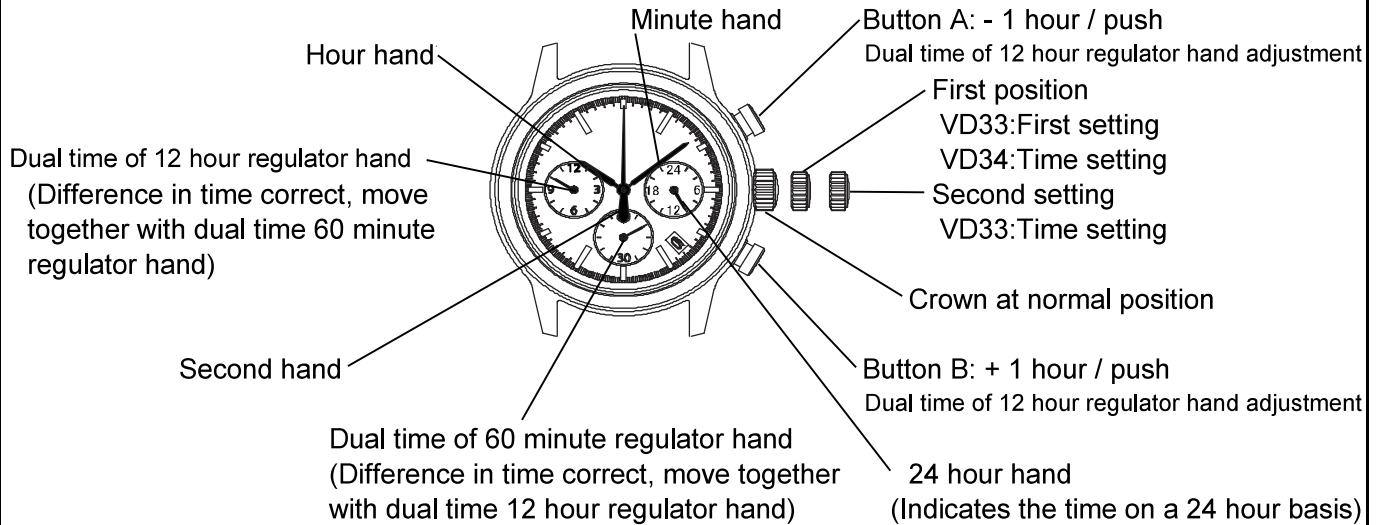


DISPLAY AND CROWN / BUTTON OPERATION



Note

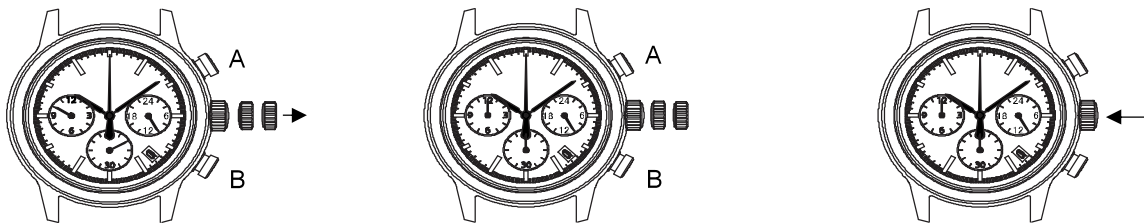
*Dual time of 60 minute regulator hand rotates one revolution every 15 minute.
There is no problem because this is typical function.

ADJUSTING THE DUAL TIME OF 12 HOUR REGULATOR AND DUAL TIME OF 60 MINUTE REGULATOR HANDS POSITION

Before setting the time, check if the dual time of 12 hour regulator and dual time of 60 minute regulator hands are in the "0" (12 o'clock) position.

If either of the dual time of 12 hour regulator and dual time of 60 minute regulator hands are not in the "0" position, reset them following the procedure below.

The battery setting and after battery change, please execute the "0" position adjustment.



1.Pull out the crown.
VD33:second click
VD34:first click

2.Keep the buttons A & B pressed at the same time more than 2 seconds, and then release the buttons.
*Dual time of 60 minute regulator hand moves. Returned to where it was.

3.Press button A or B to reset the dual time of 12 hour regulator and dual time of 60 minute regulator hands to "0" position.

*By pressing button A the hands move counter clockwise.
*By pressing button B the hands move clockwise.
*Press and hold the button, possible to fast-forward modification.
*Dual time of 12 hour regulator hand are linked to dual time of 60 minute regulator hand.

4.Push the crown back to the normal position.

Note

Please repeat above 4 steps, as 0 position adjustment, if the dual time of 60 minute regulator hand moves as follows;

Up to 1 minute to 14 minutes, one step / push, in 15 minutes, repeat the one rotation / push

TIME SETTING



- 1.Pull out the crown when the second hand is at the 12 o'clock position.
[Crown position]
VD33:Second click
VD34:First click
- 2.Turn the crown to set the hour and minute hands.
(Check that 24 hour hand is set correctly)
- 3.Push the crown back normal position in accordance with a time signal.

Note

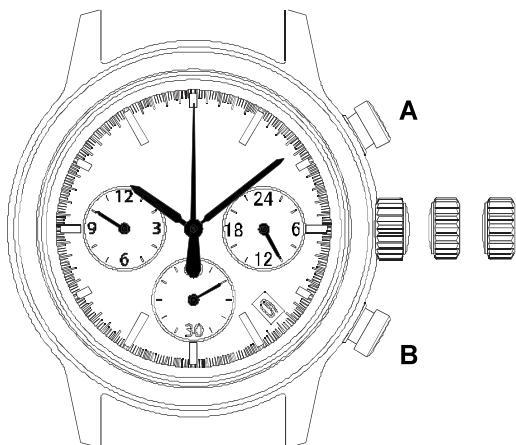
- *The 24 hour hand moves correspondingly with the hour hand.
- *The moment the date changes is midnight. when setting the hour hand, make sure that AM/PM is correctly set by using the 24 hour hand as an AM/PM indicator.
- *At the time of carrying, dual time of 60 minute regulator hand rotates one revolution every 15 minutes. There is no problem because this is typical function.

■ Using the time different correction

When moving to a country or area which is in a different timezone, the current time in the local time can be corrected.

- 1.Crown the normal position.
- 2.To adjust the time by pressing the button A or B.
 - *By pressing button A the hands move counter clockwise. - 1 hour / push
 - *By pressing button B the hands move clockwise. + 1 hour / push

TIME SETTING (DUAL TIME OF 12 HOUR REGULATOR AND DUAL TIME OF 60 MINUTE REGULATOR HANDS)



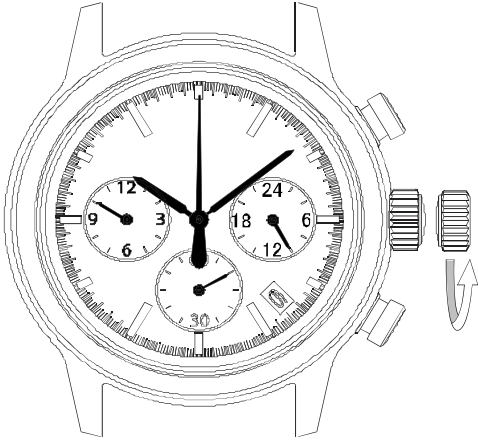
- 1.Pull out the crown when the second hand is at the 12 o'clock position.
[Crown position]
VD33:Second click
VD34:First click
- 2.To adjust the time by pressing the buttons A or B.
By pressing button A the hands move counter clockwise.
By pressing button B the hands move clockwise.
*Press and hold the button, possible to fast-forward modification.
- 3.Push the crown back in to the normal position.

Note

Every 15 minutes, dual time of 60 minute hand is one rotation / push.

DATE SETTING (Cal.VD33 only)

*Before setting the date, be sure to set the time.



- 1.Pull out the crown to the first click.
- 2.Turn the crown to clockwise until the next date appears.
- 3.Push the crown back in to the normal position.

Note

*Do not set the date during any time between 9:00 P.M. and 1:00 A.M.

Otherwise, the date may not change properly. If it is necessary to set the date during that time period, First change the time to any time outside it, set the date and then reset the correct time.